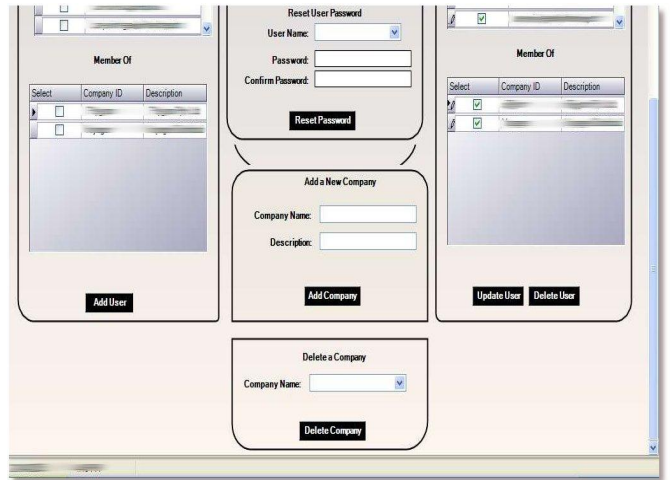
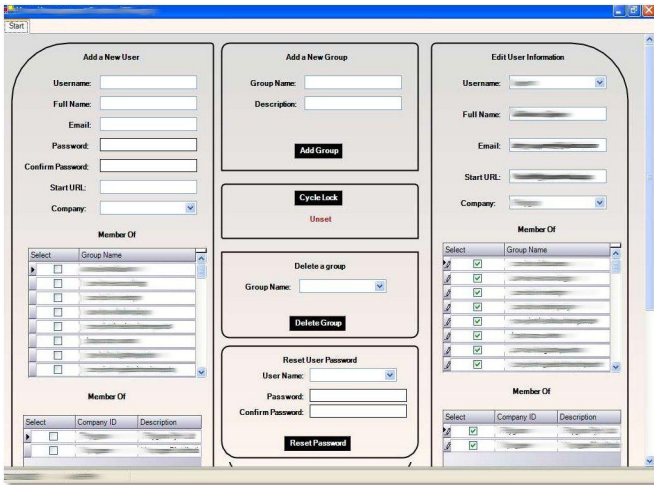


User Management System

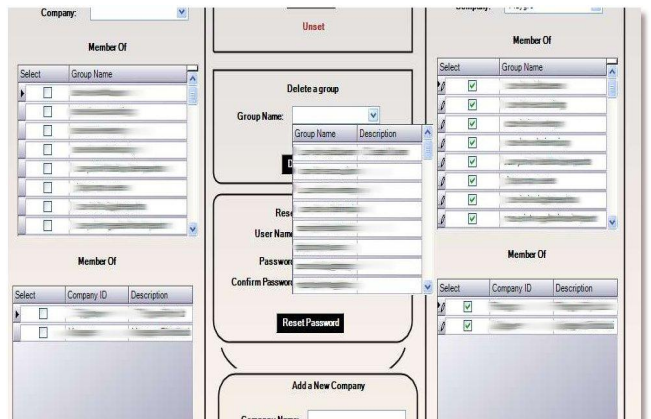
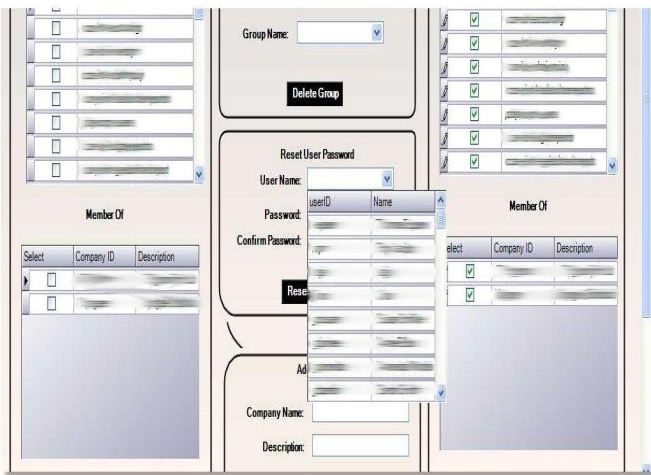
User Management



The main user management screen which managed the user and group information across multiple companies. The user database was obtained from web services.

The user's password, access groups, companies he/she belonged to can all be changed, added, removed

User Management (cont)



Combo boxes, grids are used to manage user data

The web-service is locked when an instant of the User Management system is opened which gave exclusive access to the system admin to change user data. The user passwords are combined with a random salt variable and hashed before being stored in the XML data store.