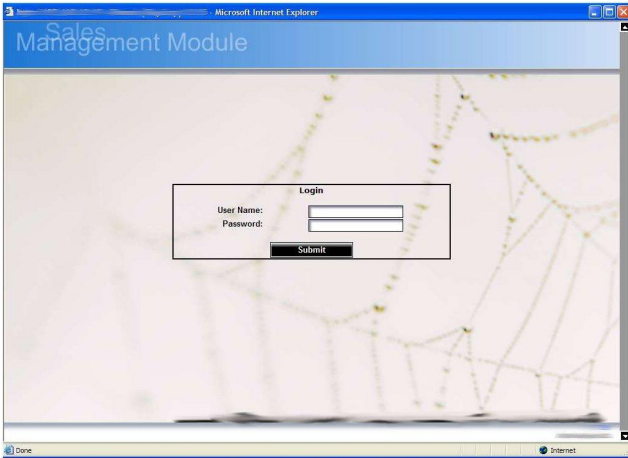


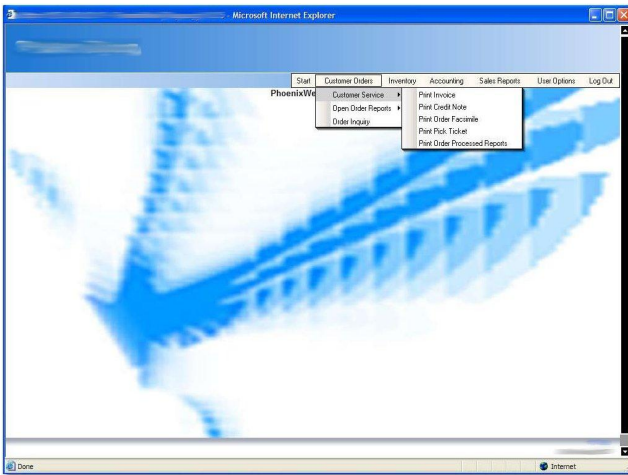
Web Framework

Forms based authentication



- Forms based authentication which authenticates against a common authentication web service which serves both web and windows applications.

Role based authorization



- The menu class has built in role based security which enables/disables menu items based on user groups. Page level protection also compliments the role based access.

Searching/Viewing

A search form to retrieve data for reporting/printing

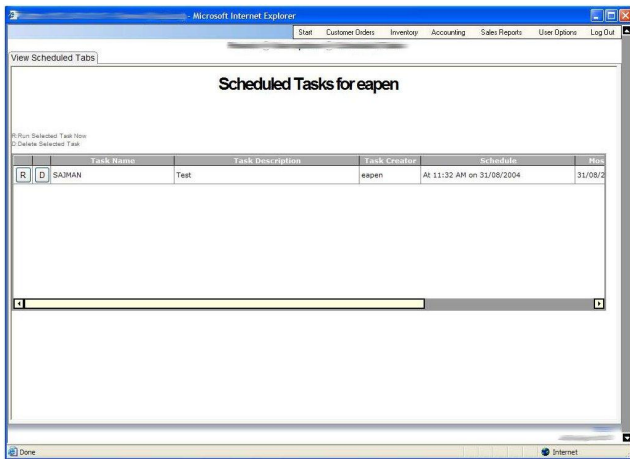
A grid based view of the results of the search. The interface is tab-based which gives it a very rich-client look.

Reporting

A report view of the search results.

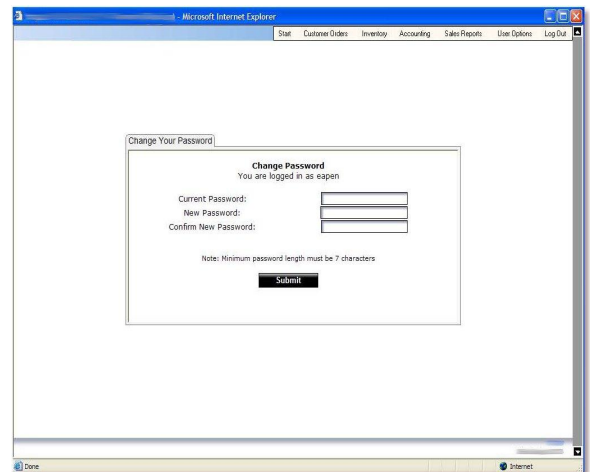
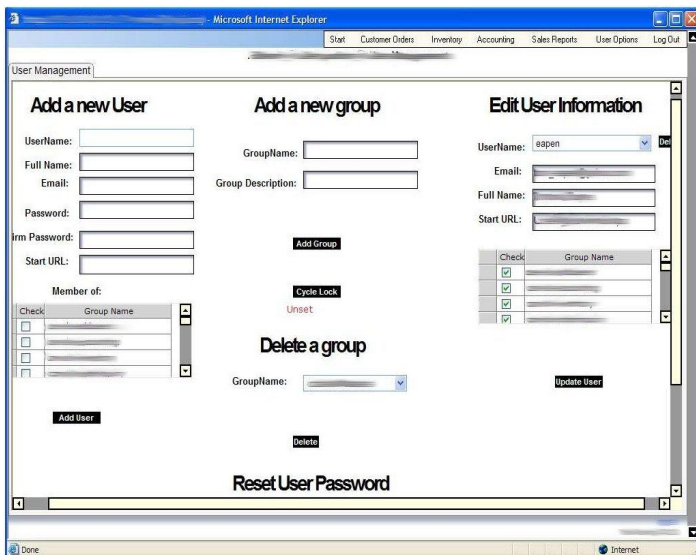
A printable PDF view of the report.

Scheduling



- Long running reports are a problem with web applications. One way that I have solved this problem is by interfacing the web application to a windows scheduler by which we can schedule long running tasks. A command line application is scheduled by the web scheduler interface and the command line arguments are passed to the scheduled task.
- The command line application runs the task as scheduled and sends the report as an email attachment to the user.

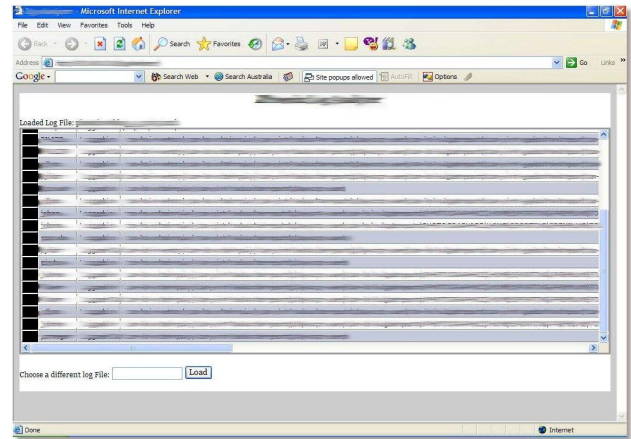
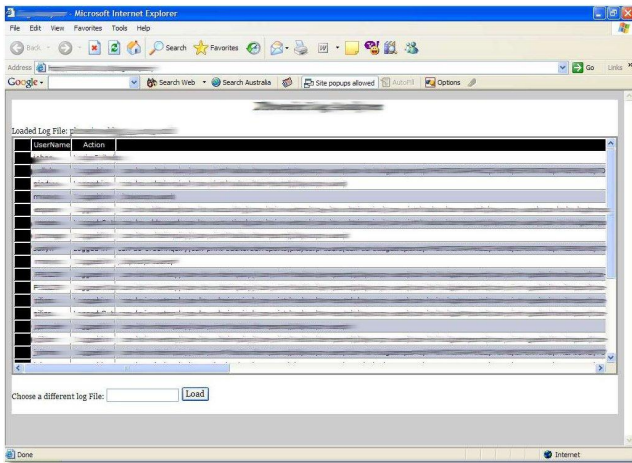
User Management



Individual users can modify their own passwords

A user/group management system is part of the framework which is used to add/edit/remove user and group information.

Logging



Logging is an integral part of the Web framework. Logs of users, user groups, log in/log out times are all recorded along with environmental information such as Browser, IP etc.